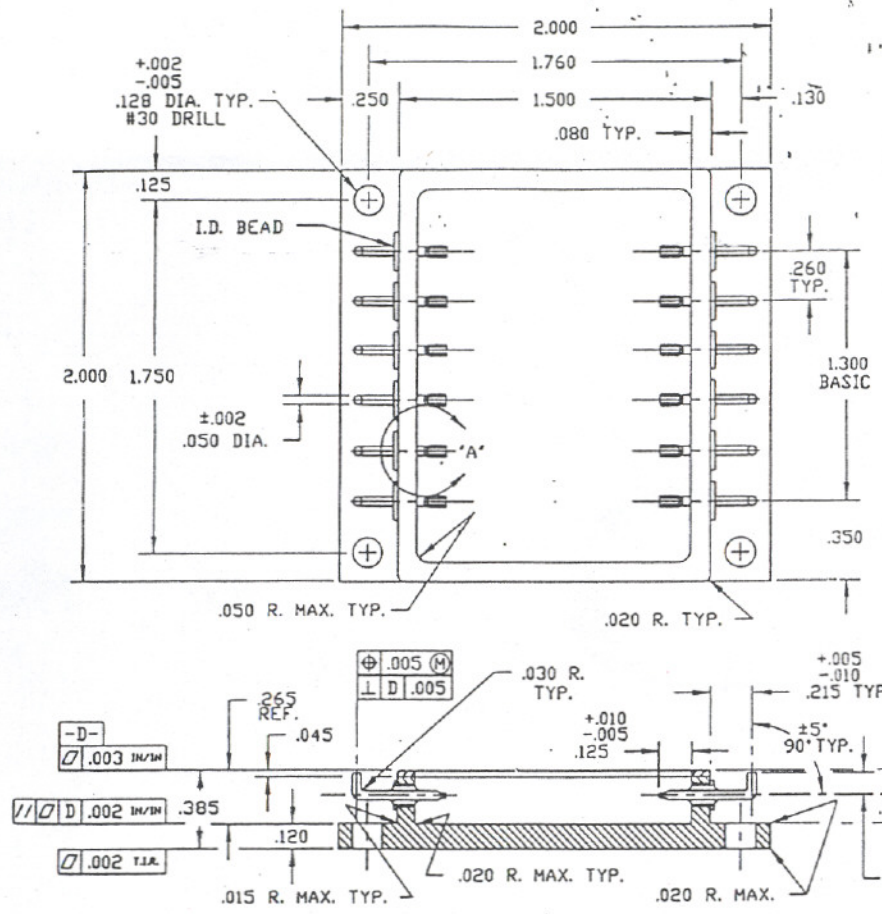
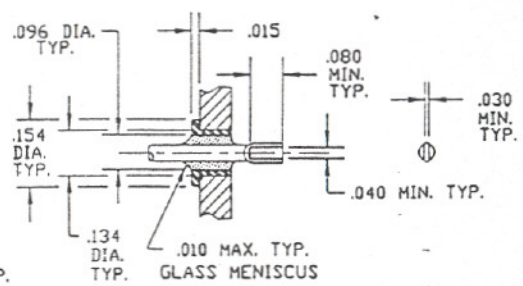


REV.	DESCRIPTION	DATE	APP'D



- NOTES:
1. MATERIAL:
BODY: EXPLOSIVE FABRICATED MATERIAL (HALF HARD CDA 107 COPPER WITH ASTM F-15 ALLOY EXPLOSIVELY BONDED TOGETHER.)
TERMINALS EYELETS - COLD ROLLED STEEL
PINS - Cu/52 ALLOY
 2. COPPER HARDNESS MUST BE GREATER THAN RF 73 AFTER ASSEMBLY.
 3. BOTH LENGTH AND WIDTH OF LEAD FLAT TO BE PARALLELL TO SEAL RING SURFACE WITHIN 3 DEGREES.



DETAIL "A"

DR. <i>Giola</i> 7/15/92			
CHK.			
APP'D			
UNLESS OTHERWISE SPECIFIED DIMENSIONS ARE IN mm. TOLERANCES ARE: XX ± XXX ± ANGLES - ±		POWER PACKAGE - 12 PIN	
CODE ID 69210		A	REV.
		DRAWING NO.	
		MAT'L:	SCALE:
		SHT.	OF