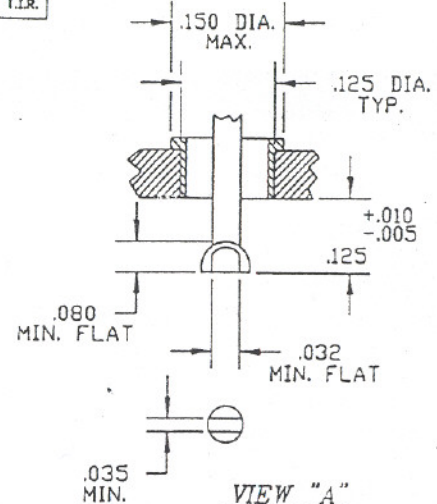
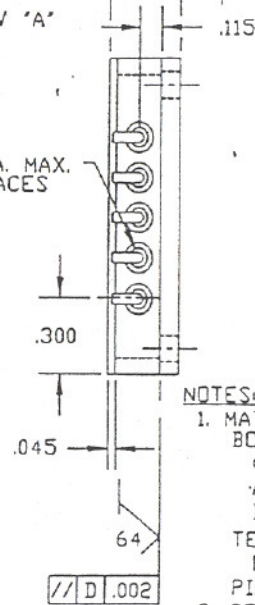


\square .003 IN/IN
-D-

\square .002 T.I.R.



NOTES:

1. MATERIAL:
BODY: EXPLOSIVE FABRICATED MATERIAL
(HALF HARD CDA 107 COPPER WITH
ASTM F-15 ALLOY EXPLOSIVELY
BONDED TOGETHER.)
TERMINALS EYELETS - COLD
ROLLED STEEL
PINS - 52 ALLOY PER ASTM F-30
2. COPPER HARDNESS MUST BE GREATER
THAN RF 73 AFTER ASSEMBLY.
3. BOTH LENGTH AND WIDTH OF LEAD FLAT
TO BE PARALLELL TO SEAL RING
SURFACE WITHIN 3 DEGREES.

GEN. TOL.
±.005

DR. *Glora 7/15/92*
CHK.
APP'D *CKD 7-15-92*
UNLESS OTHERWISE
SPECIFIED DIMENSIONS
ARE IN mm.
TOLERANCES ARE:
XX - ± XXX - ±
ANGLES - ±

POWER PACKAGE - 10 PIN

A	DRAWING NO.	REV.

MAT'L:	SCALE:	SHT. 1 OF 1
--------	--------	-------------

CONF ID 69210